

2019-2020

MYANMAR

PRIVATE JOURNEYS

INSIDER
JOURNEYS

Imagine the stories



Travelling – it leaves you speechless,
then turns you into a storyteller.

Ibn Battuta





INSIDER JOURNEYS

**For over 25 years we've
been helping travellers
like you create unique
experiences and stories
that will last a lifetime.**

Explore Myanmar your way with our independent travel collection. Whether you want to see the plains of Bagan peppered with thousands of ancient temples, explore the pagodas and colonial buildings of Yangon, witness the unique rowing technique of the fisherfolk on Inle Lake, cruise the mighty Irrawaddy River or do all of the above, our selection of private itineraries, City Explorer packages and river cruises will give you real insight into this amazing country.

All our experiences are designed with flexibility in mind by our Asia experts.

If you can't find exactly what you're looking for, we will tailor-make an itinerary to suit your specific needs.

Let us help you discover Asia
as an insider.

Imagine the stories...

See the world. Meet new people. Find yourself.
Have a story worth telling.

Anonymous





Contents

The Insider Journeys Experience	6
Myanmar	10
13 Day Myanmar Experience	12
13 Day Myanmar Villages & Beaches	13
Yangon	14
Bagan	17
Mandalay	20
River Cruises	23
Terms & Conditions	26

The Insider Journeys Experience

At Insider Journeys, we make it easy to holiday in Asia.



U Bein Bridge, Mandalay

Our private travel collection will allow you to experience Asia as an insider with the flexibility to explore at your own pace. Whether it's getting up early to beat the crowds, staying longer to watch that amazing sunset or spending time chatting to a local, it's this level of flexibility that makes all the difference.

We know that to truly experience Asia, you need to wander off the tourist trail occasionally. Our collection of private itineraries will provide you with experiences that a guidebook alone simply cannot offer.

Whether you're travelling with your partner, family, a group of friends or solo, connecting you with Asia's heart is what we do best.

Let us help you experience Asia as an insider!

A word from our travellers...

“Our holiday proceeded flawlessly, with no problems at all. Our drivers were courteous and happy to assist, our guide was fantastic and our accommodation was great. Thank you so much for making our holiday such a success.”

JOHN, TASMANIA

“We enjoyed our tour tremendously. The tour was made even more memorable by our tour guide – the best guide we have encountered. We will certainly be recommending Insider Journeys to all our friends.”

CAROL & JOHN, QUEENSLAND



Kalaw, Shan Hills

Ready To Book Private Itineraries

Each of our unique, Ready to Book Private Itineraries are designed by our team of passionate Asia experts.

Every itinerary includes the must-see highlights and genuine experiences of Myanmar. From the moment your trip begins, our Private Itineraries provide a seamless travel experience.

To get a sense of the 'real' Asia, our itineraries take you off the tourist trail while ensuring you don't miss any of the must-see places. With plenty of free time and the services of knowledgeable local guides in each destination, you'll really feel like an insider!

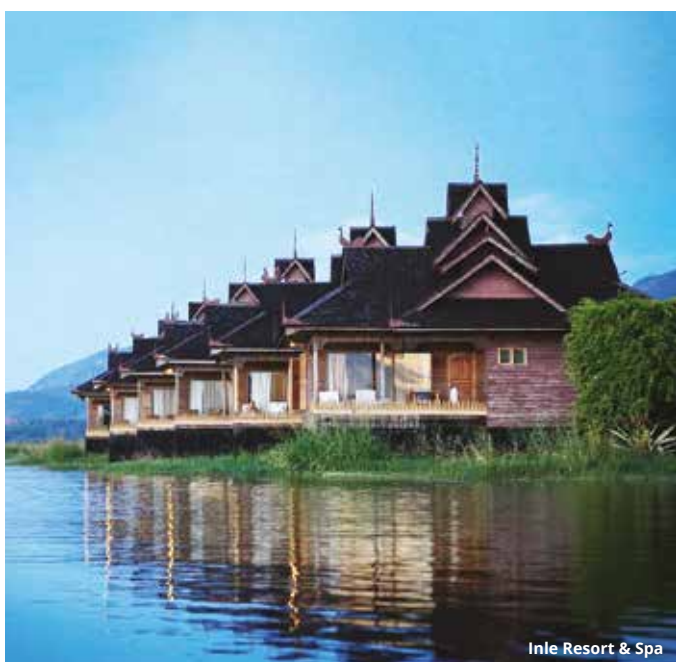


Yangon

City Explorer Packages

Our City Explorer packages offer the perfect introduction to the captivating cities in Myanmar. From the colonial feel of bustling Yangon to the ancient ruins of Bagan, from the serene waterways of Inle Lake to the historical and spiritual Mandalay, these short stays include accommodation, airport transfers and sightseeing with knowledgeable, local English-speaking guides.

There's a range of accommodation options from which to choose. Book as a stand-alone or combine with another City Explorer for the perfect Asia experience.



Inle Resort & Spa

Bespoke Accommodation

As well as our Ready to Book Private Itineraries and City Explorer packages, we offer an extensive range of accommodation options and experiences, so you can customise your Asia holiday.

Our hotels have been handpicked for comfort, location and to provide you with an insight into the region.

Where possible, we have selected properties with great local colour.

From overwater cottages built on stilts to sprawling resorts with amazing views, we have accommodation options to suit all tastes and budgets.

Create Your Own Insider Journey

We know one size does not always fit all. So why not take creative control and create your own insider journey!



Our team of experts can help design a bespoke itinerary to suit your interests, timeframe and budget.

Use any of our Ready To Book Private Itineraries or City Explorer packages as inspiration or start from scratch with your own ideas.

We have a wide range of accommodation, sightseeing and transport options from which to choose and knowledgeable English-speaking local guides who will introduce you to their cities and towns in a way that only a local can do.

Whether it's exploring ancient pagodas and ruins without the crowds, meeting friendly local hilltribe communities, unwinding at a tropical beach resort or cruising the lakes and rivers of this amazing country, Insider Journeys will connect you with the heart of Asia as only an insider can!



The Places We'll Take You

From its sheer beauty to the genuine warmth of its people, Asia has a wonderful way of getting under your skin. Let us introduce you to our favourite places in Myanmar.



Inle Lake

Central Myanmar

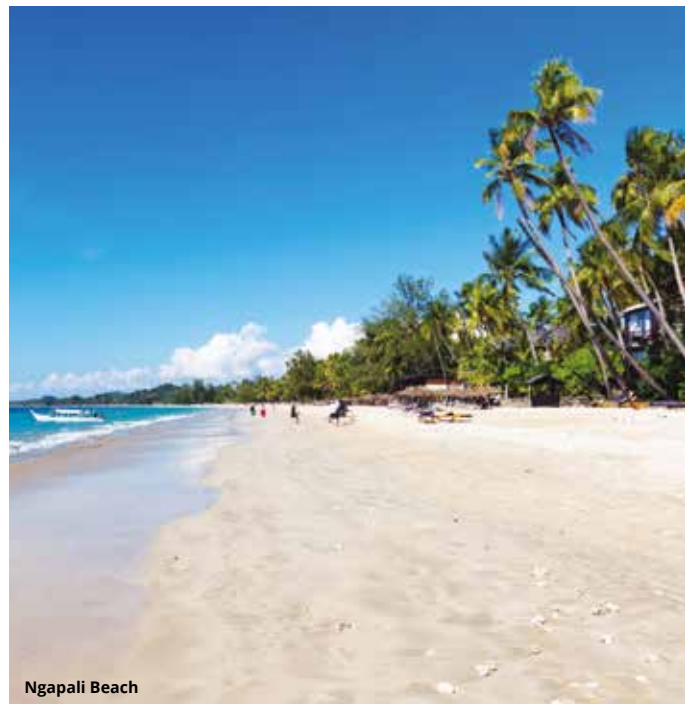
Discover old-world Asia in Central Myanmar with traditional fishing communities, colourful village markets and ancient temples.



Shwedagon Pagoda, Yangon

Lower Myanmar

Golden pagodas sit alongside quaint colonial buildings in Yangon. Further south-east, hill-top rocks and sacred caves are a highlight.



Ngapali Beach

Coastal Myanmar

For a change of pace, the golden beaches of Ngapali or the water playground of the Mergui Archipelago beckon.

Myanmar

Uncover exotic Myanmar, a country that offers an off-the-beaten-path experience with interesting cultures and varied landscapes. Cruise the Irrawaddy and discover riverside life, visit intricate golden temples, explore stupa-covered plains and venture to beautiful beaches and forested hills.



Golden Rock, Mt Kyaiktiyo



Imperial Ruins

Myanmar is sprinkled with ruins of its ancient past. Best viewed at sunset, the plains of Bagan are strewn with thousands of ancient temples and endless spires. Wander the remains of monasteries and palaces once home to Burmese kings in Ava.



Lakes & Rivers

Cruising the waterways of Myanmar provides a great opportunity to observe local life. Enjoy slow days drifting along the Irrawaddy River, exploring remote villages and bustling markets. On Inle Lake, watch in wonder as local fishermen use their traditional one-legged rowing technique.



The Golden Land

With so many golden pagodas across the country, Myanmar is known as The Golden Land for good reason. See the mesmerising Shwedagon Pagoda in Yangon and the impressive Shwezigon Pagoda in Bagan. Visit the sacred Golden Rock sitting precariously on the cliff's edge atop Mt Kyaiktiyo.

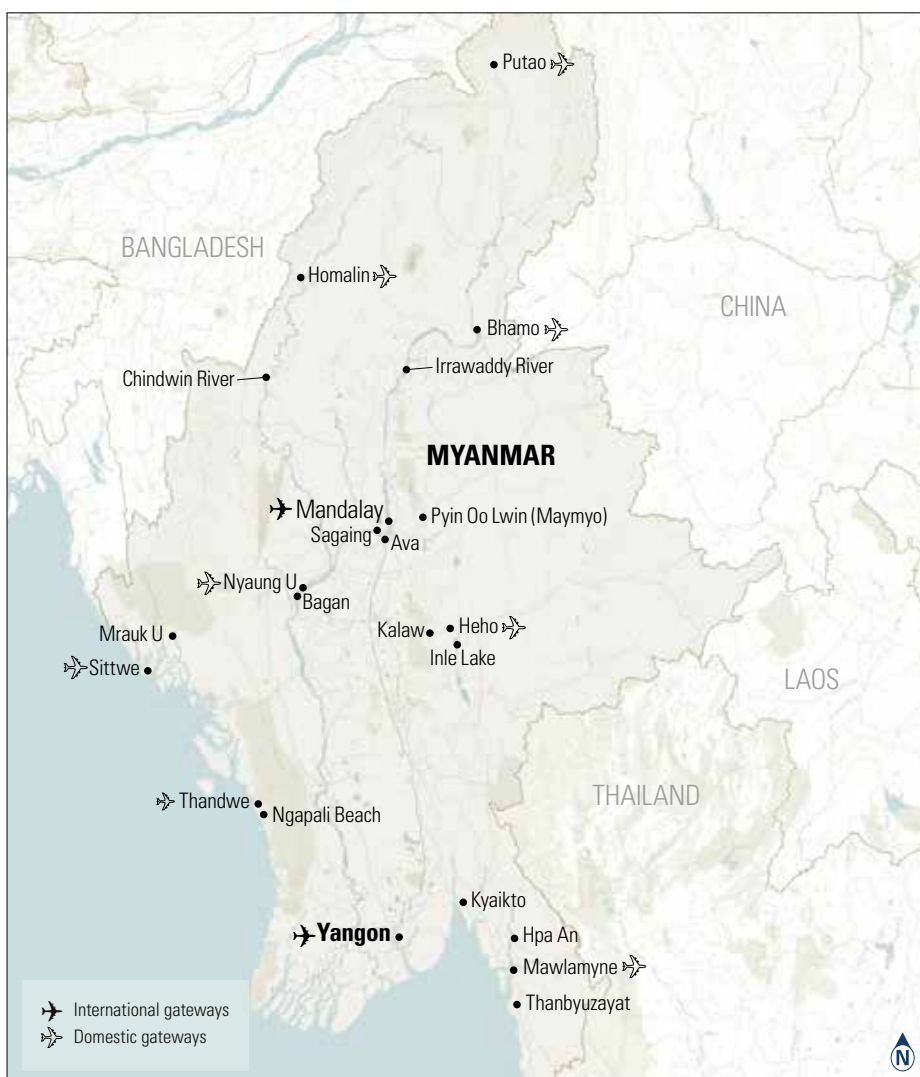
When To Go

It is possible to travel in Myanmar for most of the year. The coolest and driest months are November to February. It's advisable to book well in advance for this period.

March to May are the hottest months, while June to September are the wettest – Ngapali Beach is largely inaccessible during this time of the year.

Average min/max temperature (°C)

	MAR-MAY	JUN-AUG	SEP-NOV	DEC-FEB
YANGON	24°/37°	24°/29°	24°/31°	8°/32°
MANDALAY	24°/38°	26°/34°	23°/32°	13°/28°
NGAPALI BEACH	22°/33°	23°/28°	23°/31°	12°/29°



Myanmar Experience

13 DAY PRIVATE ITINERARY FROM \$2,549* PER PERSON



Mt Popa, Bagan

HIGHLIGHTS:

- 📍 Climb to sacred Poppa Taungkalat Monastery, perched high on the top of Mt Popa.
- 📍 Witness the ever-changing colours as the sun sets over the spectacular temple-studded plains of Bagan.
- 📍 Take a cruise on Inle Lake, surrounded by stilt houses and floating gardens. Watch in awe as the fishermen use their unique one-legged rowing techniques.



'The World's Largest Book', Kuthodaw Pagoda, Mandalay



DAYS 1-2 Yangon

On arrival in Yangon, be transferred to your hotel. The following day, take a full day walking tour of the city. Stay two nights at Hotel G Yangon. (B)

DAY 3 Yangon to Mandalay

Be transferred to the airport and fly to Mandalay. Head to Ava and discover monasteries and forts. In Mandalay, an afternoon tour will take you to Mandalay Hill and 'The World's Largest Book'. Stay the next two nights at Bagan King Hotel. (B)

DAY 4 Mandalay

On a full day tour, visit Amarapura and walk along U Bein Bridge. Experience Sagaing Hill's hundreds of whitewashed pagodas and monasteries. (B)

DAY 5 Mandalay to Bagan

Spend a day cruising to Bagan enjoying the scenery along the Irrawaddy. Stay the next three nights at Thazin Garden Hotel. (B)

DAY 6 Bagan

Meet with your local guide and enjoy a full day touring Bagan's most important monuments. (B)

DAY 7 Bagan

On a full day tour, explore Bagan's other monuments and visit Myinkaba Village. In the afternoon, cruise the Irrawaddy to Kyauk Gu U Min temple. (B)

DAY 8 Bagan to Mt Popa & Kalaw

On a full day tour, climb the stairs up to Mt Popa. Journey to rural Kalaw, nestled in the Shan Hills. Overnight at Pine Hill Resort. (B)

DAY 9 Kalaw to Inle Lake

Wander the morning market frequented by located hilltribes. Take the local train through the Shan Hills and be transferred to Inle Lake. Stay the next three nights at Inle Resort. (B)

DAY 10 Inle Lake

Explore Inle Lake on a full day boat trip. See the fishermen with their famous leg rowing technique. (B)

DAY 11 Inle Lake

At a morning cooking class, learn about Shan cuisine and enjoy your creations for lunch. (BL)

DAY 12 Inle Lake to Yangon

Be transferred to Heho Airport and fly to Yangon. Be transferred to your hotel and enjoy free time. Overnight at Hotel G Yangon. (B)

DAY 13 Yangon

Check-out of your hotel and be transferred to the airport. (B)

INCLUDES:

- 12 nights 3 to 4 star hotel accommodation
- Train from Kalaw to Inle Lake
- All flights as specified in the itinerary
- Transport in air-conditioned vehicles
- Private touring
- Entrance fees
- Local English-speaking guide
- Return airport transfers to accommodation
- Meals as indicated (B = breakfast, L = lunch)



Inle Lake

Myanmar Villages & Beaches

13 DAY PRIVATE ITINERARY FROM \$2,629* PER PERSON



Bagan



Ngapali Beach

HIGHLIGHTS:

- Visit Mandalay's sacred sites including Kyauktawgyi Pagoda with its huge marble Buddha, Kuthodaw Pagoda and 'The World's Largest Book'.
- Gain insights into local life. Visit the hilltribe markets of Inle Lake and see craftsmen at work in the villages around Bagan.
- Spend three glorious days relaxing on the beach at Ngapali.



DAYS 1-2 Yangon

On arrival in Yangon, be transferred to your hotel. The following day, take a full day walking tour and see the city's wonderful colonial architecture as well as the lively Indian and Chinese Quarters. Stop at a local tea house, see Chaukhtatgyi Pagoda and end the day at Shwedagon Pagoda. Stay the next two nights at Hotel G Yangon. (B)

DAY 3 Yangon to Mandalay

Be transferred to the airport for your early morning flight to Mandalay. Head to ancient Ava and tour the area by local horse cart. Continue to Mandalay and tour Mandalay Hill, 'Golden Palace Monastery' and 'The World's Largest Book'. Stay the next two nights at Bagan King Hotel. (B)

DAY 4 Mandalay

Travel to Amarapura this morning and visit Mahagandhayon Monastery, home to hundreds of young monks. Later, walk along U Bein Bridge before travelling to Sagaing Hill to explore some of its 600 pagodas and monasteries. (B)

DAY 5 Mandalay to Bagan

Take a full day boat to Bagan, enjoying scenes of oxen working the fields, water buffalo wallowing in the mud and golden pagoda spires. Stay the next two nights at Thazin Garden Hotel. (B)

DAY 6 Bagan

Visit some of Bagan's most important monuments such as Shwezigon Pagoda and Ananda Temple. Visit small villages to gain a glimpse into local life and see craftsmen and farmers at work. Enjoy a lovely boat ride on the famed Irrawaddy River to the cliff-side Kyauk Gu U Min. (B)

DAY 7 Bagan to Inle Lake

Enjoy a leisurely morning before flying to Heho and being transferred to Inle Lake. Stay the next two nights at Inle Resort & Spa. (B)

DAY 8 Inle Lake

Enjoy a full day touring Inle lake by local boat, gaining a fascinating insight into life on the water. In the evening, head to a local winery for wine-tasting followed by a traditional dinner. (BD)

DAYS 9-11 Inle Lake to Ngapali Beach

Be transferred to the airport and fly to Thandwe. Enjoy three relaxing days on the beach. Stay three nights at Thandwe Beach Hotel. (3B)

DAY 12 Ngapali Beach to Yangon

Be transferred to the airport for your early flight to Yangon. Overnight at Hotel G Yangon. (B)

DAY 13 Yangon

Check-out of your hotel and be transferred to the airport. (B)

INCLUDES:

- 12 nights 3 to 4 star hotel accommodation
- All flights as specified in the itinerary
- Transport in air-conditioned vehicles
- Private touring
- Entrance fees
- Local English-speaking guide
- Return airport transfers to accommodation
- Meals as indicated (B = breakfast, D = dinner)



Yangon

Perched on the shores of the tranquil Yangon River, this waterfront city is a hub of economic activity, with thriving bars and restaurants as well as an emerging art scene. The city is known for its gilded Buddhist pagodas and historic streets lined with impressive British-colonial architecture.



Shwedagon Pagoda



Shwedagon Pagoda

Shwedagon Pagoda is the city's shining jewel and features a golden stupa which dominates the skyline. The 2,500 year old stupa is encrusted with diamonds and enshrines relics of four Buddhas.



Tea House Culture

A Myanmar institution, the tea house is a place for a cup of sweet tea and a chat at any hour of the day. Try the teas at Yatha Teashop or Rangoon Tea House – two of our favourites.



Secretariat

British-colonial Architecture

Yangon boasts a large collection of fine British-colonial architecture. Some of the best examples include the Secretariat, Strand Hotel, High Court and City Hall.

Yangon City Explorer

4 DAYS FROM \$469* PER PERSON

British-colonial architecture meets an emerging art and restaurant scene in this riverside hub. For the perfect introduction, choose our Yangon City Explorer. Take a walking tour of the city, learn to cook like a local and see the sun set over the golden Shwedagon Pagoda.



DAY 1 Yangon

On arrival in Yangon, be transferred to your hotel. Stay the next three nights at Hotel G Yangon.

DAY 2 Yangon

Meet with your local guide to gain insider knowledge and tips which will help you explore Yangon during your free time. Set out on a full day guided walking tour to uncover examples of Yangon's British-colonial architecture and sites of this vibrant city. Be immersed in the wonderful sights, sounds and tastes of the lively Indian and Chinese Quarters. Try some delicious street food along the way. Visit the

reclining Buddha at Chaukhtatgyi Pagoda and see the dazzling Shwedagon Pagoda at sunset, an unforgettable sight. **(B)**

DAY 3 Yangon

Enjoy a half day discovery of the exotic herbs, spices and fresh ingredients used in Burmese cuisine today. Begin with an insightful tour of a local market and afterwards, learn to cook popular local dishes and sample your creations for lunch. The afternoon is free. **(BL)**

DAY 4 Yangon

Check-out of your hotel and be transferred to the airport. **(B)**

INCLUDES:

- 3 nights hotel accommodation at Hotel G Yangon (Good Room)
- Transport in air-conditioned vehicles
- Private touring
- Entrance fees
- Local English-speaking guide
- Return airport transfers to Yangon accommodation
- Meals as indicated (B = breakfast, L = lunch)

UPGRADE your hotel or extend your stay to experience everything this beautiful city has to offer. See page 16 for other hotel options and experiences.



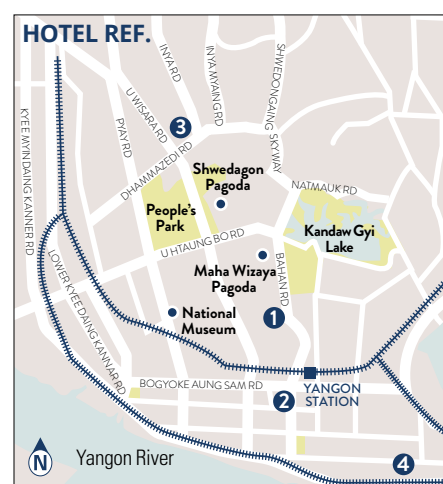
Good Room

HOTEL G YANGON



Centrally located in Yangon, Hotel G Yangon is a vibrant lifestyle hotel with a subtle urban design. The hotel is a short walk to Yangon Central railway station and nearby attractions include Shwedagon Pagoda, the National Museum and Bogyoke Aung San Market. The hotel boasts 85 rooms decorated in vivid colours and trendy furniture. Each room offers a range of amenities and modern technology including a smart television and an e-reader for newspapers and magazines. Stay active at the spacious fitness centre, enjoy a meal at the restaurant or relax with a drink at the bar.

MAP REF. 1



YANGON CITY EXPLORER – HOTEL UPGRADE OPTIONS



SULE SHANGRI-LA



MAP
REF. 2

Sule Shangri-La is located in the heart of the city, ideal for exploring the markets, monuments, eateries and architecture of this fascinating city. This graceful property enjoys close proximity to the dramatic Shwedagon Pagoda. Its classic style evokes colonial times, with graceful rooms combining antique furnishings and local art. Enjoy a full range of facilities within the hotel. The fitness and recreation centre features a swimming pool, sauna, steam room, gym as well as a range of massage and reflexology treatments. Dining at the hotel is an Oriental delight, with a fine dining restaurant or more casual café on offer.

from **\$569*** per person for 4 Day Yangon City Explorer (Superior Room)



THE SAVOY



MAP
REF. 3

This elegant, boutique-style property is situated in the city's most picturesque neighbourhood.

Each room evokes a bygone-era with Burmese antiques and teak furniture. Spacious bathrooms are elegant and well equipped with modern amenities.

Relax in the lush gardens which house well-established trees, as well as a lovely outdoor pool. The peaceful ambience of this classic property creates an idyllic oasis in the heart of Yangon.

from **\$665*** per person for 4 Day Yangon City Explorer (Deluxe Room)



THE STRAND YANGON



MAP
REF. 4

Built in 1901, this property is a beautifully renovated Victorian icon filled with local art and antiques. The hotel's beloved chandeliers, charming ceiling fans and authentic period furnishings remain in this grand and glamorous setting. Each large suite boasts teak floors and luxurious bathrooms. Rooms reflect The Strand's distinguished past while modern technologies ensure a seamless connection to the modern world. Enjoy fine dining at the restaurant, a leisurely meal or high tea at the café, and finish with a drink at the historic bar. Relax by the pool, stay active at the gym and be pampered in a therapy room.

from **\$969*** per person for 4 Day Yangon City Explorer (Superior Suite Room)

YANGON EXPERIENCES



Shwedagon, The Winking Wonder Experience

Half Day / Private

The 99 metre tall Shwedagon Pagoda is the country's most famous and sacred site. The current hti (a golden umbrella that adorns the top of pagodas) is decorated with approximately 85,000 jewels, with the centrepiece being a 76-carat diamond. Enshrined inside the pagoda itself is said to be the relics of four previous Buddhas. Up at the top platform, explore the numerous walkways, smaller shrines and a plethora of ancient Buddhist artefacts. Enjoy brushing shoulders with the locals as they go about paying their respects and take the opportunity to strike up conversation with practicing monks.

from **\$64*** per person



Heritage Walking Tour & High Tea Afternoon / Private

Yangon is home to a vast array of magnificent architecture from the British-colonial era.

Join a heritage walking tour to marvel at the city's colonial architecture including City Hall, the High Court and the old Rowe & Co department store. Some are beautifully restored, while others exude a faded glory.

End your tour at the elegant Strand Hotel for a delicious high tea. Settle into your rattan chair at The Strand Café and enjoy views of Yangon River and watch the people of Yangon go about their business through beautiful teak-framed windows.

from **\$87*** per person



Yangon Cooking Class

Half Day / Private

Try your hand at creating some regional culinary specialties of southern Myanmar with the trainees of the Padonmar Restaurant.

Start with a visit to a local market and learn about the vast array of fresh produce and ingredients which make Burmese cuisine so delicious.

Take part in an interactive cooking class, then feast on your own creations for lunch. Gain insights into the lives of the young locals at the end of your class.

from **\$109*** per person

Bagan

Following the Irrawaddy River to the central plains brings you to Bagan, where thousands of temples dot the dusty plains. The vista of this multitude of temples, each a work of art in its own right, is magnificent at sunset as the orange rays illuminate the soaring spires as far as the eye can see.



Temples of Bagan



Temples of Bagan

The sight of more than 4,000 temples scattered across the dusty landscape is almost mythical. See the vista from afar at sunset or from the air at sunrise. Explore some of the most important temples – Ananda Temple and Shwezigon Pagoda.



The Irrawaddy

Discover vibrant scenes of local life as you float along the Irrawaddy. The river is a place where locals come to bathe and wash their clothes, and its banks are home to villages, farms and interesting sights including Kyauk Gu U Min temple.



Village Life

The villages of Bagan offer a great insight into the rural way of life. Be greeted by friendly faces and see locals at work on their craft, be it weaving or silversmithing. Learn about their farming practises and how their houses are made.

Bagan Cultural Explorer

3 DAYS FROM \$319* PER PERSON

The ancient city of Bagan is known for its endless plains covered in temples, stupas and monasteries. For the perfect introduction, choose our Bagan Cultural Explorer. See these important sites and gain an insight into the local culture with village visits and a cruise on the Irrawaddy River.



Temples of Bagan



DAY 1 Bagan

On arrival, meet your local guide and embark on a full day tour of Bagan. Set out to explore Bagan's magnificent historic temples with explorations of some of its most important sites. Visit Shwezigon Pagoda, Gubyaukgyi Temple, Sulamani Guphaya Temple and the architectural masterpiece of Ananda Temple, built in 1105 AD. End the day atop a grassy mound with sunset views over the temple-studded plains, illuminating the dramatic spires as far as the eye can see. Stay the next two nights at Thazin Garden Hotel.

DAY 2 Bagan

On a full day tour, venture to charming Minnanthu Village to gain insights into local life. Stop at a village blacksmith and a traditional lacquerware workshop to see craftspeople at work. Cruise on the Irrawaddy River to reach Kyauk Gu U Min, a cliff-side temple known for its intricate stone carvings. If time and water levels permit, stop at an atmospheric riverside village before returning to Bagan. (B)

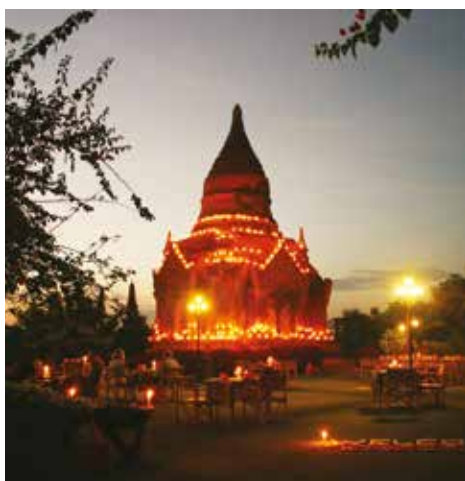
DAY 3 Bagan

Check-out of your hotel and be transferred to the airport. (B)

INCLUDES:

- 2 nights hotel accommodation at Thazin Garden Hotel (Deluxe Room)
- Transport in air-conditioned vehicles
- Private touring
- Entrance fees
- Local English-speaking guide
- Return airport transfers to Bagan accommodation
- Meals as indicated (B = breakfast)

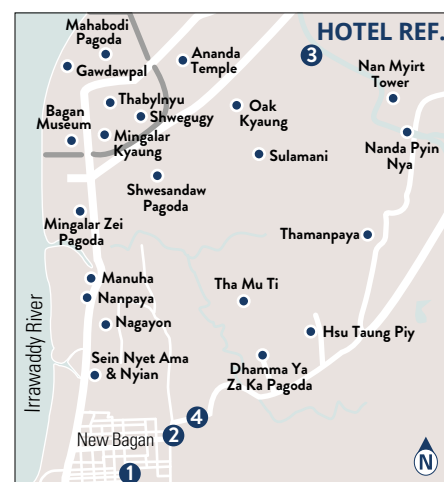
UPGRADE your hotel or extend your stay to experience everything this beautiful region has to offer. See page 19 for other hotel options and experiences.



THAZIN GARDEN HOTEL

Overlooking the surrounding ruins and pagodas of ancient Bagan, this hotel boasts traditional Burmese architecture. Each bungalow-style room features local touches and a delightful verandah with views of the lush garden surrounds. The hotel boasts a relaxing poolside restaurant, decorated with Bouganvillea flowers, perfect for a relaxing lunch. Enjoy a temple dinner at the open-air restaurant, as the pagoda is adorned with candles, burning oils and soft moonlight. Other facilities available include a swimming pool, billiards room as well as massage and beauty services.

MAP
REF.
1



BAGAN CULTURAL EXPLORER – HOTEL UPGRADE OPTIONS



AMATA GARDEN RESORT BAGAN

MAP
REF.
2

A haven of peace and tranquillity, Amata Garden Resort Bagan offers easy access to the famous Bagan temples and more. Tucked snugly amidst almost seven acres of beautifully landscaped gardens, the resort offers spacious and elegant rooms. All 122 rooms have a balcony and offer a complete range of amenities to ensure the comforts of the modern world in an ancient land. From Continental to Asian and an array of local home-styled delicacies, dining at the resort is a pleasure. Enjoy the al fresco seating where you can savour the simple yet delectable menu while relaxing by the pool after a long day of sightseeing.

from **\$339*** per person for 3 Day Bagan Cultural Explorer (Amata Deluxe Room)



AUREUM PALACE HOTEL & RESORT

MAP
REF.
3

This sprawling hotel overlooks a breathtaking scene of Bagan's pagoda-studded landscape across a lotus-dappled lake. Deluxe rooms sit in a low-rise building with its own restaurant, bar and swimming pool, while villa-style rooms dot the gardens. Antiques, artefacts and local arts uniquely adorn each villa, complementing the majestic ambience of the resort and its surroundings. Discover local and international cuisine in a typical Myanmar atmosphere, indoor, al fresco or poolside.

from **\$439*** per person for 3 Day Bagan Cultural Explorer (Deluxe Room)



BAGAN LODGE

MAP
REF.
4

Experience the unforgettable sight of the temples of Bagan from a property based at the edge of the archaeological zone.

This boutique, low-rise property blends harmoniously with its surrounds, using neutral colours and natural materials to reflect Bagan's historic plains. Each room evokes a colonial-era luxury tented camp, with rattan furnishings and local textiles.

A wonderful swimming pool and an elegant restaurant which showcases local cuisine and international fare complete the experience.

from **\$449*** per person for 3 Day Bagan Cultural Explorer (Villa Room)

BAGAN EXPERIENCES



Temples of Bagan

Full Day / Private

The plains of Bagan, peppered with thousands of ancient temples and stupas, remain one of the richest archaeological sites in Asia. Visit the most important pagodas and temples including Shwezigon Pagoda and Ananda Temple. Within Ananda Temple stands four imposing statues of Buddha. One statue features a facial expression that appears to change depending on the distance and angle from which it is viewed. At the end of the day, enjoy a magnificent sunset over the temples of Bagan.

from **\$102*** per person



Irrawaddy Sunset Tipple

Evening / Private

End the day in style with a private cruise along the banks of the Irrawaddy River. Travelling the length of Bagan with a beer or soft drink in hand, this leisurely experience will take you away from the crowds and provide an authentically local taste of life 'behind the temples'. As the boat ventures out towards the middle of the river, the spires and umbrellas of ancient stupas start to become visible. This is also the best time to cross paths with farmers, fishermen and market sellers wanting to return home before darkness sets in. With the boat's engine temporarily muted, there will be plenty of time to appreciate this and take photographs of the passing scenery.

from **\$185*** per person



Balloons Over Bagan

Morning / Join-in

Bagan is one of the most remarkable sights in Asia, with ancient temples dotting the landscape into the distance.

View this extraordinary site from the air on an exhilarating 45 minute sunrise Champagne flight by hot air balloon. This unforgettable flight is an incredible experience and offers a unique perspective of the temples.

Note: This tour operates from October to March.

from **\$598*** per person

Mandalay

As the last royal capital of Myanmar, this historical city was built at the foot of Mandalay Hill on the edge of the Irrawaddy River. A cultural and religious centre, Mandalay is home to monasteries, monks and pagodas, and is also a major centre for arts and crafts.



Mandalay Hill



Mandalay Hill

Join Myanmar's Buddhists on the pilgrimage up Mandalay Hill. A climb to the summit is rewarded with spectacular views of the city, as well as wonderful interactions with friendly locals and young monks.



The World's Largest Book

At the foot of Mandalay Hill is 'The World's Largest Book' at Kuthodaw Pagoda. See the 729 white marble slabs inscribed with Buddhist teachings, each in its own shrine. You may even see children learning from the scriptures.



U Bein Bridge

Used every day by villagers and monks, the longest teak bridge in the world is an impressive structure. The bridge spans a large lake in the wet season, or gardens in dry season and offers good views, particularly at sunset.

Mandalay City Explorer

3 DAYS FROM \$365* PER PERSON

Set on the Irrawaddy River, this historic pagoda-filled town was Myanmar's last royal capital and is now a cultural and religious centre. For the perfect introduction, choose our Mandalay City Explorer. Visit monasteries and pagodas, watch monks and nuns at work, and see 'The World's Largest Book'.



U Bein Bridge



Sagaing Hill

DAY 1 Mandalay

On arrival be transferred to your hotel. On a half day tour, head into the city to see the exquisite wood carvings of the Golden Palace Monastery, Kyauktawgyi Pagoda with its huge marble Buddha and Kuthodaw Pagoda, home to 'The World's Largest Book'. End your tour with wonderful views from Mandalay Hill. Stay the next two nights at Yadanarpon Dynasty Hotel.

DAY 2 Mandalay – Sagaing, Ava & Amarapura

Journey out of Mandalay for the day, beginning with Sagaing Hill. The area is covered with over

600 white-washed pagodas and monasteries, and is home to over 3,000 monks and nuns. Continue to Ava, the ancient capital of Myanmar from the 14th to 18th centuries, now a sleepy rural area, cut-off from busy roads by streams and canals. Visit the teakwood Bagaya Monastery. Later head to Amarapura and walk along the iconic 200-year-old teak U Bein Bridge which spans 1.2 kilometres. Visit Mahagandhayon Monastery, home to hundreds of young monks. (B)

DAY 3 Mandalay

Check-out of your hotel and be transferred to the airport. (B)

INCLUDES:

- 2 nights hotel accommodation at Yadanarpon Dynasty Hotel (Superior Room)
- Transport in air-conditioned vehicles
- Private touring
- Entrance fees
- Local English-speaking guide
- Return airport transfers to Mandalay accommodation
- Meals as indicated (B = breakfast)

UPGRADE your hotel or extend your stay to experience everything this beautiful city has to offer. See page 22 for other hotel options and experiences.



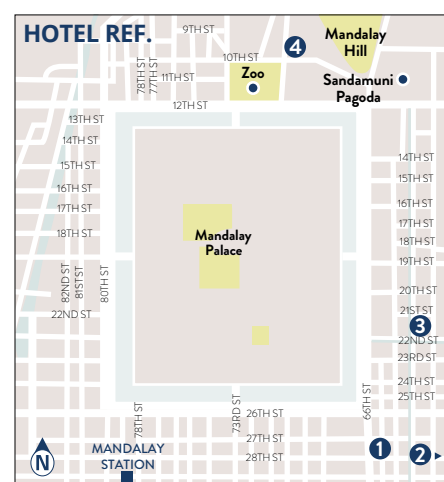
YADANARPON DYNASTY HOTEL

MAP REF. 1

Located near Mandalay Palace, this property is nestled along a peaceful street in the heart of Mandalay.

The hotel features traditional architecture using bronze and teak with a contemporary design. Each room is simple yet tastefully-decorated and features the essential conveniences to ensure a comfortable stay. Choose a Deluxe room and enjoy relaxing on your private balcony.

Enjoy a range of Western and traditional Burmese dishes at the restaurant while taking in the spectacular landscape from the roof terrace.



MANDALAY CITY EXPLORER – HOTEL UPGRADE OPTIONS



Junior Suite

RUPAR MANDALAR RESORT


MAP
REF.
2

Rupar Mandalar Resort is a romantic hotel with an exotic atmosphere. The hotel has 46 rooms designed with the outstanding use of traditional timber and boasting all modern amenities such as cable television, wireless internet access, hair dryer and air-conditioning.

Facilities include a swimming pool, sauna, gym, health and beauty spa as well as a restaurant and bar serving a variety of cuisines including Burmese, Thai, Chinese and European.



HOTEL BY THE RED CANAL


MAP
REF.
3

A charming, boutique property at the heart of Mandalay, this is a well-located base to set out and explore the city's historic architecture, temples and cultural sites such as the nearby Mandalay Palace. The hotel is designed to reflect traditional Myanmar architecture, with comfortable, bright rooms featuring teak furniture and textiles from some of the country's ethnic minority groups. Dine at the wonderful Spice Garden restaurant which offers Burmese as well as Indian cuisine, and relax by the atmospheric pool set among lush tropical gardens. The hotel's small size ensures personalised service.



Deluxe Double Room

MERCURE MANDALAY HILL RESORT


MAP
REF.
4

Take in panoramic views of Mandalay's temples from this stylish property located at the base of Mandalay Hill. Within walking distance of the impressive Mandalay Palace, the property is ideally situated to set out on foot. The luxurious rooms reflect the region's heritage with their imperial décor, from silk bedspreads to intricate artworks. The indulgent spa, tennis courts, gym and pool are all wonderful places to unwind after exploring. There are a range of great restaurants onsite, from upscale Chinese to authentic Burmese cuisine.

from **\$439*** per person for 3 Day Mandalay City Explorer (Deluxe Room)

from **\$459*** per person for 3 Day Mandalay City Explorer (Run of House Room)

from **\$469*** per person for 3 Day Mandalay City Explorer (Superior Palace View Room)

MANDALAY EXPERIENCES



Dinner with a Local Family Evening / Private

Spend time with a local family in Mandalay as their dinner guest. This is a wonderful opportunity to gain insights into Burmese family life as you chat to your hosts over a delicious home-cooked meal. See their home and dine in a traditional family style, sitting on cushions on the floor around a low round table sharing a selection of local dishes. You can look forward to a warm welcome, tasty food and fascinating conversation which will be facilitated by your local English-speaking guide acting as a translator.

from **\$98*** per person



Ava, Sagaing & Amarapura Full Day / Private

Cross the Irrawaddy River to Sagaing Hill, an area covered with over 600 white-painted pagodas and monasteries and home to over 3,000 monks and nuns. Visit the local market and a small village where pottery making has been a tradition for generations. Continue to ancient Ava. Tour the area by local horse cart, visiting the delightful 19th century teak wood Bagaya Monastery. Also see the remains of the masonry watchtower Nanmyin, Singyone Fort and the impressive Maha Aungmye Bonzan. Later, visit Amarapura and Mahagandhayon Monastery, home to hundreds of young monks, then head to U Bein Bridge for a walk along this 200 year old teak bridge.

from **\$120*** per person



Mandalay City Tour & Mingun Full Day / Private

Enjoy a tour of Mandalay including Mandalay Hill for some wonderful views of the city, Shwe Nandaw Kyaung or 'Golden Palace Monastery', Kyauktawgyi Pagoda with its huge marble Buddha and Kuthodaw Pagoda, home to 'The World's Largest Book'. In the afternoon, embark on a boat trip up the Irrawaddy River to the village of Mingun. Visit the Mingun Bell which is the world's largest uncracked bell, Mingun Pagoda and Hsinbyume Pagoda. Throughout Mingun there are small neighbourhoods making traditional baskets and other arts and craft. Enjoy plenty of time to shop for souvenirs and interact with the craftsmen and friendly locals.

from **\$125*** per person

River Cruises

Running north to south through the centre of Myanmar is the important Irrawaddy River. Discover great scenery, meet friendly locals and visit fascinating villages as you cruise along this great river with the convenience of a boutique river boat at your fingertips.



RV Paukan 2007



Premiere Bow Cabin, RV Paukan 2012



Authentic Experiences

Explore small villages and markets for an authentic experience as you sail to places that larger ships simply can't reach. On some cruises, you can choose your shore excursion so you can do as much or as little as you like.



The Strand Cruise

Onboard Service

Many of the staff on board are internationally trained, offering you the type of service you would expect in a four or five-star hotel. Your every need is personally attended to with high staff to passenger ratios.

A Floating Hotel

Check-in to your floating hotel room and unpack just once as the sights and sounds of the river come to you. Ships have spacious cabins with private balconies on most cruises. Great dining and onboard facilities are also on offer.

The Strand Cruise

4 DAYS FROM \$1,249* PER PERSON



Hsinbyume Pagoda, Mingun

HIGHLIGHTS:

- 📍 Spend three glorious nights on the Strand's elegant river boat and enjoy world-class cuisine and impeccable service.
- 📍 Take a journey back in time as you explore the ancient capital of Ava by horse cart.
- 📍 Explore Ananda Temple, an architectural masterpiece and one of the four main temples of Bagan.



DESIGN & SERVICE

Built in 2015, the ship's style takes inspiration from the mystical waterways of the Ayeyarwady River. Styled after its sister property, 'The Strand Yangon', the ship offers all the features and service passengers would expect from a Strand product.

CABINS

Cabins have been furnished in style, with regional art and indigenous teak wood flooring. Every cabin offers floor-to-ceiling windows, en suite bathrooms and complimentary wireless internet.

FACILITIES & ACTIVITIES

Enjoy the ever-changing landscape from the sundeck with a cocktail in hand, cool off in the infinity pool or opt for a treatment at the onboard spa. A schedule of activities, lectures and cultural demonstrations are on offer. The daily menu of on shore excursions provides comprehensive small group tours with expert local guides.

SPECIFICATIONS

Built: 2015
Ship Length: 61 metres
Number of Decks: 4 decks
Cruising Speed: 10 knots
Capacity: 50 passengers
Cabins: 25 featuring private balconies
Crew: 45 crew members

DAY 1 Mandalay to Mingun

Begin with a welcome breakfast at U Bein Bridge then visit Mahamuni Pagoda. After enjoying lunch aboard, sail to Mingun, one of the country's former capitals. Visit the unfinished pagoda, as well as the Hsinbyume Pagoda and Mingun bell. Stay the next three nights on board The Strand Cruise. (BLD)

DAY 2 Ava

Journey to Ava, one of Myanmar's ancient imperial capitals, for a delightful horse cart ride through the naturally preserved landscape and key landmarks. Visit Yadana Shemee before cruising onwards throughout the afternoon towards the ancient city of Bagan. (BLD)

DAY 3 Bagan

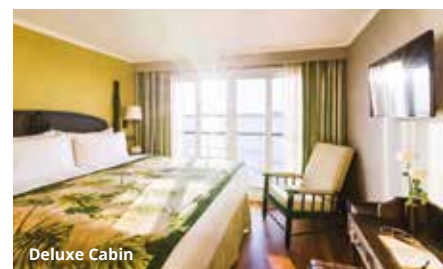
Explore Bagan's wonders, including the Ananda Temple, one of the most exquisite temples of the country, the Shwezigon Pagoda, renowned for its gold leaf décor as well as the beautiful Sulamani and Gubyaukgyi temples. Re-join your fellow guests for a farewell dinner full of gastronomic delights. (BLD)

DAY 4 Bagan

After breakfast on board, disembark and be transferred the airport or your hotel. (B)

INCLUDES:

- 3 nights on board The Strand Cruise (Deluxe Cabin)
- Local English-speaking guide
- Shore excursions
- Entrance fees
- Transfer from port to Bagan Airport or accommodation
- Meals as indicated (B = breakfast, L = lunch, D = dinner)



Deluxe Cabin

3 and 5 day cruises from Bagan also available. Contact us for details.

Note: Contact us for departure dates. Itinerary is subject to change depending on river conditions.

Paukan Cruises

4 DAYS FROM \$1,975* PER PERSON



HIGHLIGHTS:

- Explore the lovely teak Bagaya Kyaung Monastery in Ava. This 600 year old monastery boasts intricate carvings of flower motifs, birds and other animals.
- Visit Hpowindaung Caves, where hundreds of chambers carved into the stone hills house images of Buddha.
- Watch locals use their traditional methods to make clay pots in Yandabo, a great insider experience.

DESIGN & SERVICE

RV Paukan 2012 was 'born' on the banks of the Yangon River, where men worked on her with traditional craftsmanship. She is a compact but elegant vessel made of teak with a hull of marine steel. The décor is modern chic, with a touch of Myanmar culture, and the service is impeccable.

CABINS

All cabins are comfortable with en suite bathrooms, balcony and French window.

FACILITIES & ACTIVITIES

The dining room is a spacious hall on the main deck. All meals are prepared with loving care by experienced chefs. The lounge on the upper deck is the perfect place to make new friends and the roof deck is wonderful for an evening drink as the sun sets. Experienced local English-speaking guides will show you the best and most authentic experiences on shore.

SPECIFICATIONS

Built: 2012
Ship Length: 42 metres
Number of Decks: 3 decks
Cruising Speed: 9 knots
Capacity: 34 passengers
Cabins: 18 featuring private balconies
Crew: 25 crew members

DAY 1 Sagaing to Ava

Board your ship at Sagaing. Enjoy a welcome cocktail and lunch before visiting the ancient city of Ava by horse cart. See the beautiful teak Bagaya Kyaung Monastery, Nanmyin watchtower and Me Nu Ok Kyaung monastery. Stay the next three nights on board RV Paukan 2012. (LD)

DAY 2 Monywa

Early this morning, travel by coach to Monywa to visit Hpowindaung Caves, where hundreds of Buddha statues are placed inside niches decorated with wonderful mural paintings. Enjoy lunch at local restaurant. After lunch, visit the splendid Sambuddhai Kat Kyaw pagoda with its more than 500,000 Buddha images. (BLD)

DAY 3 Yandabo & River Village

In the morning, arrive at Yandabo, a picturesque village that specialises in pot making and is where the peace treaty of the First Anglo-Burmese War signed in 1826. Go ashore for a walk, stopping at some pot making workshops and to visit the monastery. Sail downstream during lunch then visit a river village for a walk. Enjoy a puppet show after dinner tonight. (BLD)

DAY 4 Salay

After breakfast, disembark at Salay jetty. (B)

INCLUDES:

- 3 nights on board RV Paukan 2012 (Main Deck Cabin)
- Local English-speaking guide
- Shore excursions
- Entrance fees
- Meals as indicated (B = breakfast, L = lunch, D = dinner)



Other cruises and ships also available.
 Contact us for details.

Note: Contact us for departure dates. Itinerary is subject to change depending on river conditions.

Booking Conditions

Please read these conditions carefully as they set out the basis upon which we accept all bookings. We reserve the right to amend our booking conditions from time to time. Please check with your travel consultant for our up to date booking conditions, which are also available on insiderjourneys.com.au before making a booking.

Brochure validity: This brochure was produced on 21 March 2019 and is valid until 31 December 2019 and should be used only as a guide in relation to other dates. Exchange rates used when pricing this brochure are as at 19 February 2019. Please note that the content in this brochure is based on information supplied by Third Party Travel Providers and is subject to alteration with or without notice. Please check with your travel consultant about up to date prices, availability and information before making a booking.

Responsibility

1. Insider Journeys acts as an agent for the Suppliers (transport, tour, event or accommodation providers) who provide the various goods and/or services (Products). All bookings are subject to the terms and conditions and limitations of liability imposed by each Supplier. It is therefore important for you to obtain and read the applicable Supplier's terms and conditions as they may limit or exclude their liability to you.

In producing this brochure, we have used information provided by Suppliers. Irrespective of any measures taken by us to ensure the information contained in this brochure is accurate at the time of production, Insider Journeys disclaims and will be exempt from liability in respect of anything misleading, false, incomplete or inaccurate and any errors, inaccurate description and all associated disappointment, loss, expense, damage, inconvenience, delay, death, shock, illness or injury, however caused.

Insider Journeys does not control the manner in which Products featured within this brochure are provided. Insider Journeys disclaims and will be exempt from liability for anything to do with the supply of such Products. This includes liability (whether as a matter of contract, tort, statute, restitution, or otherwise) for any direct, indirect or consequential loss, liability, claim, cost, expense, proceeding, demand, penalty, disappointment, death, injury, illness, shock, inconvenience or delay. This limitation of liability also applies irrespective of the cause, including negligence of us or a Supplier, withdrawal, cancellation or failure to provide a Product, delay, any variation in the Product, the provision of substitute Products or a change in the Supplier. Without limitation, Insider Journeys will not be responsible if the Product is not available due to inclement weather conditions or other acts of God, civil disturbances, fire, floods, acts of Government or any other authorities, accident to or failure of machinery or equipment or industrial action.

Prices for Travel Products

2. All pricing is reflected in Australian Dollars unless otherwise specifically denoted and is valid at time of publication but is subject to change. 'From' prices represent land only and low season twin share prices (unless otherwise clearly stated). Unless otherwise stated, prices include all government levies and airport taxes as at the date of publication. Dates, itineraries and prices are indicative only. Private Travel and Asia River Cruising prices are valid for travel during low season and will vary depending on date of travel. We will use our reasonable efforts to notify you of changes in prices. The Third Party Travel Provider may be required to impose surcharges depending on currency fluctuations, surcharges or other variables outside of its control. You acknowledge and agree that you shall be responsible for the prompt payment of all surcharges and price increases. A fee will apply for payments made by debit and credit cards. Please check this fee with us or your travel consultant when booking.

Minimum Booking Requirement & Service Fees:

3. The following minimum booking requirement and service fees will apply to a booking:
 - A service fee of A\$20 per booking will be charged for train and internal Asia sectors booked without other land arrangements (includes Japan);
 - Ticket delivery fees may be charged if a flight or train is the first service in a booking.

Deposit & full payment

4. A non-refundable deposit of A\$200 per person and passenger names as per passport are required 5 days after issuance of an invoice. Additional deposits may be required depending on the policies of the Third Party Travel Provider. Any additional deposits will be advised at the time of booking or on the invoice. Full payment is due and payable to us 65 days prior to the scheduled date of departure from Australia and will be notified to you in your confirmation of booking.
5. We are not responsible for any changes made by a Third Party Travel Provider to the balance due date and prices are not guaranteed until payment has been made in full and documents have been processed and issued to you. Failure to pay a deposit within 5 days from the date of confirmation or in full by the due date may result in the automatic cancellation of your booking without refund of monies paid, unless you have been unable to complete the booking and pay the balance by the due date, due to our fault.
6. Bookings made within 35 days of scheduled departure require full payment on request.
7. Payment for domestic flights and regional flights in Asia must be received within 3 days of booking to avoid automatic cancellation. All bookings are subject to availability at time of booking.
8. Groups – a non-refundable deposit of A\$500 is due within 5 days of confirmation. Final payment is due by 65 days prior to departure.

Cancellation by the traveller

9. All cancellations must be received in writing. No refunds will be made for unused services. Cancellations will be subject to the following cancellation fees applied per person, per confirmed booking:
 - for cancellations made more than 65 days before the scheduled date for departure from Australia – no refund of deposit;
 - for cancellations made between 10-65 days before the scheduled date for departure from Australia – a cancellation fee of 25%;
 - for cancellations made within 10 days of the scheduled date of travel arrangements – a cancellation fee of 100% applies.Additional cancellation charges may apply according to the terms and conditions of the Third Party Travel Provider.
10. We will not charge a cancellation fee if:
 - you cancel your booking due to a breach by us of any of our obligations to you or due to our fault; or
 - the Third Party Travel Provider cancels your booking for no fault on your part.
11. Notwithstanding clause 9, cancellation of air, cruising, rail and other Third Party Travel Provider arrangements may be subject to fees in accordance with the terms you agree with the Third Party Travel Provider, which are separate to our cancellation fees. Refunds will not be given for unused or cancelled services after your arrangements have commenced.

Amendments by the traveller

12. Once itineraries are confirmed with a deposit on file, one amendment free of charge is permitted provided the amendment is made 65 days prior to departure. All amendments within 65 days prior to departure are subject to a A\$50 per booking amendment fee plus any additional fees charged by the Third Party Travel Provider.

Cancellation & amendments by Third Party Travel Provider

13. If the Third Party Travel Provider changes any part of your booking for reasons beyond its control, for example, if a Third Party Travel Provider changes its schedules, overbooks, or if there are any changes in applicable surcharges, fees or taxes, we will use our reasonable endeavours to notify you. If any such changes result in your Travel Product costing more or otherwise being materially different, then you may cancel the Travel Product and we will refund any monies already paid less any fees charged by us under these terms and conditions and by the Third Party Travel Providers under the terms and conditions you agreed with them. Please check with your consultant before cancelling or amending a Travel Product in these circumstances as some Third Party Travel Providers may charge cancellation fees up to 100% of the Travel Product's price as per their terms and conditions.

Travel documents

14. Travel documents will be issued after final payment has been received. Travel documents may include special conditions including restrictions such as baggage size and weight limits. Travel documents are not transferable. All airline tickets must be issued in the name of the passport holder and some carriers will deny carriage if the name varies and the booking may be cancelled. We have no responsibility for any loss or damage arising from the incorrect entry of a passenger's name or as a result of the Third Party Travel Provider's policies. It is your responsibility to collect all travel documents prior to travel.

Airfares – cancellations & amendments

15. Prices displayed in this brochure or provided by us, do not include airfares from or to your departing destination, unless specified. All flights bookings are subject to the carrier's conditions of carriage. Cancellation and refund policies associated with airfares vary according to airfare terms and conditions and the relevant airline. It is your responsibility to understand the terms and conditions that relate to your airfare and contact the relevant airline if you require further information. It is your responsibility to contact the airline prior to departure to ensure there is no change to the scheduled departure time. Please ensure all flight details are correct prior to ticketing as we cannot assume responsibility for incorrectly issued flights. We do not offer advice on Frequent Flyer eligibility on flights.

Other cancellation & amendments

16. A Third Party Travel Provider may cancel, reschedule or amend any itinerary in accordance with operating requirements or circumstances beyond its control. This includes alterations to cruise itineraries and schedules including change of embarkation and disembarkation points. We are not responsible for any other travel arrangement affected due to the Third Party Travel Provider's cancellations or amendments. Amendments beyond the Third Party Travel Provider's control may involve a surcharge for the additional or amended services.

Accommodation ratings

17. The ratings featured in this brochure will provide a general indication of the standard of accommodation and may alter throughout the year due to a change of circumstance. These are our views and are not related to any other rating system. We recommend checking with your travel consultant to find the accommodation that best suits your needs and budget.

Publicity

18. You agree that we may use images of you taken during the trip and any comments made in writing by you regarding the trip, without recourse to you and without compensation to you, for publicity and promotion purposes only through whatever medium we choose.

Errors & omissions

19. We reserve the right to correct any errors in rates or content quoted or calculated for any package, with immediate effect. We will use our reasonable endeavours to notify you of such corrections.

Privacy

20. You acknowledge and agree that we may disclose some or all of your personal information as outlined in our Privacy Policy. The terms of our Privacy Policy are incorporated into these terms. A copy of our Privacy Policy is available on www.insiderjourneys.com.au.

Jurisdiction & Law

21. This brochure and all matters arising out of or in connection with it and all terms are governed by the laws applicable in the State of New South Wales. By acquiring the Booking and Advisory Services from us, you consent and submit to the exclusive jurisdiction of the Courts of New South Wales.

Definitions

"We" and **"us"** means Helloworld Travel Services (Australia) Pty Limited (ABN 84 003 237 296), trading as Insider Journeys.

"You" means any person who acquires the Travel Product and Booking & Advisory Services directly from us or indirectly through an independent travel agent and includes any person who acquires a Travel Product (whether or not the Booking & Advisory Services were acquired by another person).

“Booking & Advisory Services” means services provided by us to you in assisting you to acquire a Travel Product from a Third Party Travel Provider and includes advisory and consulting services, and providing a facility to enter into transactions with us and Third Party Travel Providers (whose details and Travel Products appear in this Brochure).

“Third Party Travel Provider” and **“Suppliers”** means the company or person who provides you with the Travel Product on terms and conditions agreed with you.

“Travel Product” means the service or product provided by a Third Party Travel Provider, for example, an airline or a hotel.

ANNEXURE TRAVEL TIPS FOR TRAVEL PRODUCTS

These tips are not legally binding terms and conditions. You should obtain and read the Third Party Travel Provider's terms and conditions which are legally binding on you.

Travel Insurance

We strongly recommend you take out appropriate travel insurance to cover your travel arrangements.

Passports, Visas & Health Requirements

Visas, including transit visas, are the passenger's own responsibility. For more information please log on to: www.dfat.gov.au or www.smarttraveller.gov.au. Please check with the respective Embassy or Consulate of each country that you are travelling to, as many destinations require visas for both Australians and non-Australian passport holders. For more information, log on to www.visalink.com.au. You need to ensure that you have at least 6 months validity on your passport from the date of your departure return. It is your responsibility to ensure that you are aware of any health requirements for your travel destinations. Vaccinations are strongly recommended for certain destinations. You need to contact your local doctor who will advise you of these requirements. Please note that vaccinations may be recommended some period in advance of travelling.

Ticketing

For international and domestic departure, e-tickets will be issued upon payment and completion of the booking process. In some instances, an e-ticket on the flights or fares selected may not be able to be issued. Bookings that cannot be issued as an e-ticket will have to be changed to comply with e-ticket regulations. All other travel documentation, such as hotel, car hire, transfer and tour vouchers will be emailed to you as an e-document. Should the Third Party Travel Provider issue paper vouchers, these will be posted to you.

Frequent Flyers & Special Requests

For more information on whether your airfare is eligible for Frequent Flyer rewards, please contact the airline directly. When booking online, please ensure that you have entered your correct number in the special section featured in the booking engine. For Call Centre bookings, please advise your Frequent Flyer details and these will be added to your reservation. We do not take any responsibility should an airline not register your trip. You should retain copies of your air ticket and boarding pass. Special requests will be passed on to the Third Party Travel Provider but cannot be guaranteed.

Special needs

Travellers with a physical or mental disability that may require special assistance during their trip must advise us of their needs upon booking and declare all pre-existing medical conditions. This enables us to ensure the suitability of each booking to the individual traveller.

Bedding configuration

Requests for specific bedding types must be made at the time of booking, however, cannot be guaranteed. Note that double rooms can be fitted with either double or twin beds, and note also that single rooms are often smaller than other rooms. Triple rooms usually comprise a twin bed room with an additional sofa bed, roll-away bed or a fold-away bed for a third person.

Travelling with children

Where a child stays for free in a room sharing with two paying adults, generally the hotel will expect the child to share the parent's bed and will not provide an extra bed. Additional charges may be levied for child meals. Where a child rate is provided in this brochure, an extra roll or fold-away bed is usually provided. Children are charged an adult rate if staying in a room without adults.

River Cruises – shore excursions & water levels

The nature of some shore excursions in Asia means that for some excursions there are no formal jetties. While staff are always on hand to assist, those with limited mobility may find these areas difficult to access. Due to the unpredictable nature of weather and its effect on river conditions and water levels, it may on occasions be necessary to complete some elements of the itinerary by land, rather than by boat, or to alter the route of the vessel including substituting some planned stops for others. Such changes can occur at any time without prior notice or warning and no refunds will be given in this instance.

Complaint Handling

In the unlikely event that you are unsatisfied with any aspect of your Travel Product, you must immediately notify the Third Party Travel Provider of your Travel Product or travel consultant (please refer to your pre-departure guide) to ensure we are given the opportunity to address and attempt to resolve any issue that you may raise at the time they occur. If a problem cannot be resolved to your satisfaction and you wish to pursue this matter further you must write to us within 28 days upon your return to the following address:

Attention Customer Service:

Level 7, 197 Coward Street, Mascot, NSW 2020

Or: customerservice@insiderjourneys.com.au

You must provide your booking reference number and full details of your complaint to allow us the opportunity to respond.

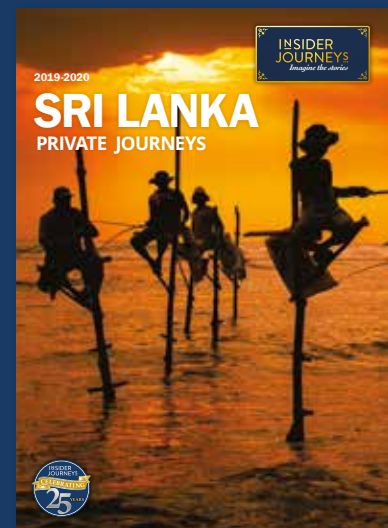
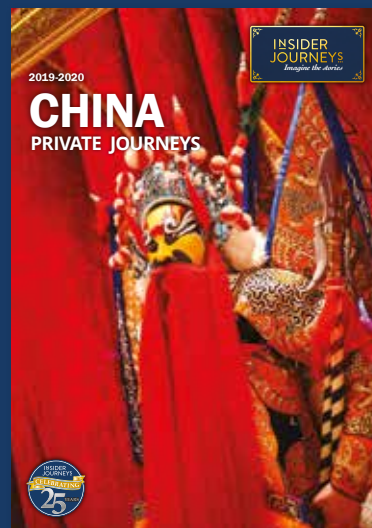
Photographers

Images used in this brochure are supplied by Ian Richards.



Inle Lake

GAIN A GENUINE INSIDER'S VIEW WITH INSIDER JOURNEYS



Pick up one of our brochures from your travel agent or contact us for further information on accommodation, tours and itineraries.

To book, see your preferred Travel Agent or **insiderjourneys.com.au** for information

Building B, Level 7, 197 Coward Street, Mascot NSW 2020 Australia

ENQUIRIES

Customer Enquiries

T: 1300 365 355

E: info@insiderjourneys.com.au

W: insiderjourneys.com.au

Travel Agent Enquiries

T: 1300 362 777

E: agents@insiderjourneys.com.au



Accredited Member Of IATA, ATIA, PATA, ACTW. ABN 84 003 237 296
Offices in Sydney, London, Los Angeles, Saigon, Danang, Hanoi,
Siem Reap, Phnom Penh and Luang Prabang.

Your Travel Agent